

Heritage Panel

WeatherXL

26 Gauge AZ50 Galvalume



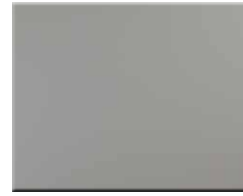
Bright White (WH)



Light Stone (LS)



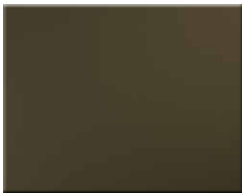
Clay (CL)



Ash Gray (AG)



Charcoal (CH)



Bronze (BZ)



Barn Red (RD)



Burgundy (BU)



Brown (BN)



Evergreen (EG)

Textured WeatherXL

26 Gauge AZ50 Galvalume



Bronze (TBZ)



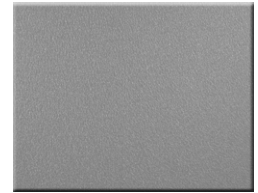
Burgundy (TBU)



Colonial Red (TCR)



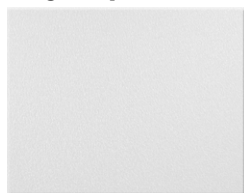
Charcoal (TCH)



Ash Gray (TAG)



Light Stone (TLS)



White (TWH)



Black (TBL)



Evergreen (TEG)



Gallery Blue (TGB)

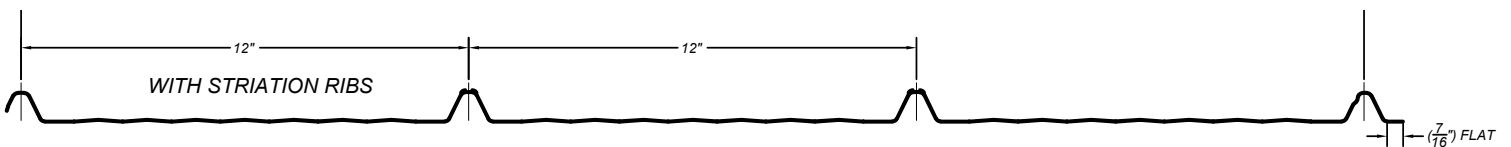


Shadow Gray (TSG)

Please note that oil canning in the flat of the panel and where it is fastened is common and not a reason for rejection. Oil canning is less noticeable in textured colors.

- 26 Gauge
- 3/4" High Ribs with 12" Spacing
- Continuous striations standard
- 36" Coverage
- Made to custom lengths

Heritage Panel Profile





Heritage Panel

Embrace the elegance of yesterday with the enduring quality of tomorrow when you get the Heritage Panel.

Faster and easier to install than Standing Seam, it's a smart choice for an affordable, classic look. Just screw down and your done.



Why Choose Textured?

Property owners like textured panels because they redirect sunlight for less glare than smooth panels. Plus the textured panels are less prone to "oil canning" which makes for a more attractive panel. Contractors like it because the texture provides more grip during installation than smooth panels. Because the textured coating is baked into the finish at the factory, our textured colors carry the same 40-year film integrity warranty as our smooth colors.

717-445-6885

abmartin.net

82 Garden Spot Road,
Ephrata, PA 17522

We strive to make our color charts as precise as possible, but the accuracy of the painted chips is not guaranteed. For 100% color matching, please request a free metal sample

 **AB MARTIN™**