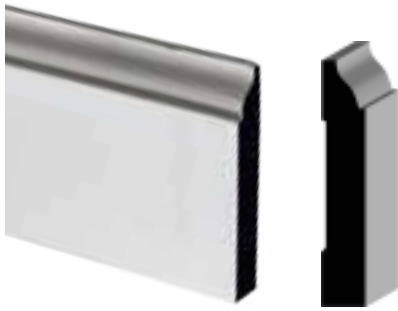


Trim Moulding

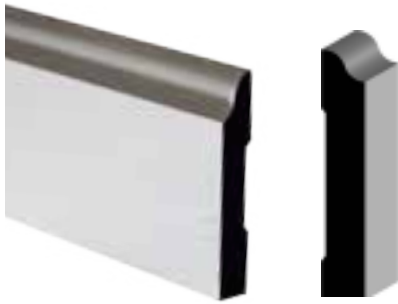




Base Trim Moulding - WM 623

Finger joint pine with a white primer coat.

Part#	Description	Size	Length
TBWM623	Base Trim Moulding Primed Finger Joint Pine WM 623	9/16" x 3-1/4"	16'



Base Trim Moulding - WM 663

Finger joint pine with a white primer coat.

Part#	Description	Size	Length
TBWM663	Base Trim Moulding Primed Finger Joint Pine WM 663	9/16" x 3-1/4"	16'



Base Trim Moulding - LWM 163E

Finger joint pine with a white primer coat.

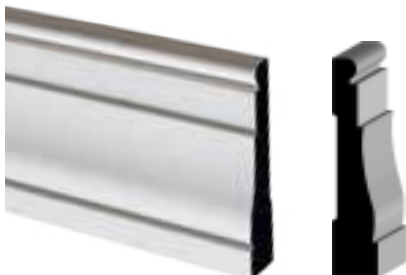
Part#	Description	Size	Length
TBWM163E	Base Trim Moulding Primed Finger Joint Pine LWM 163E	9/16" x 5-1/4"	16'



Casing - WM 376

Finger joint pine with a white primer coat.

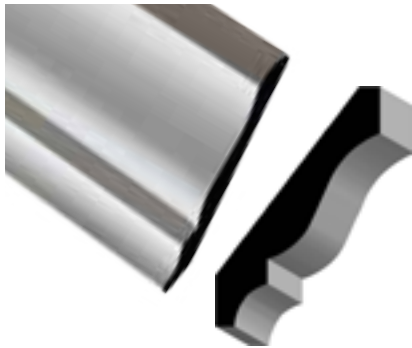
Part#	Description	Size	Length
TBWM376	Casing Trim Moulding Primed Finger Joint Pine WM 376	11/16" x 2-1/4"	14'



Casing - WM 445

Finger joint pine with a white primer coat.

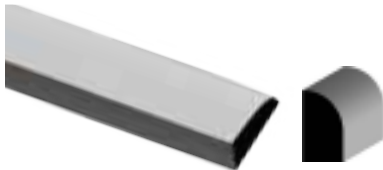
Part#	Description	Size	Length
TBWM445	Casing Trim Moulding Primed Finger Joint Pine WM 445	11/16" x 3-1/4"	15'



Crown Moulding - LWM 49

Finger joint pine with a white primer coat.

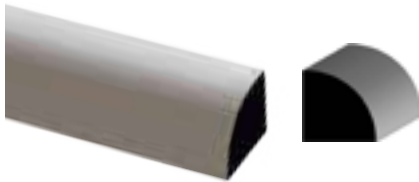
Part#	Description	Size	Length
TBWM49	Crown Moulding Primed Finger Joint Pine LWM 49	9/16" x 3-5/8"	16'



Base Shoe - WM 127

Finger joint pine with a white primer coat.

Part#	Description	Size	Length
TBWM127	Base Shoe Moulding Primed Finger Joint Pine WM 127	7/16" x 3/4"	16'



Quarter Round - WM 106

Finger joint pine with a white primer coat.

Part#	Description	Size	Length
TBWM106	Quarter Round Moulding Primed Finger Joint Pine	11/16" x 11/16"	16'



Chair Rail Moulding - WM 390

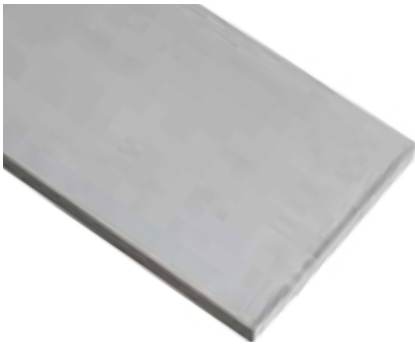
Finger jointed pine with a white primer coat.

Part#	Description	Size	Length
TBWM390	Chair Rail Moulding Primed Finger Joint Pine - WM 390	11/16" x 2-5/8"	16'



Hand Rail - WM 240

Part#	Description	Size	Length
TBWM24012	Solid Pine Hand Rail - WM 240	1-1/4" x 2-1/4"	12'
TBWM24014	Solid Pine Hand Rail - WM 240	1-1/4" x 2-1/4"	14'



Boral Poly Ash Truexterior Trim Boards

- Made with the revolutionary new poly-ash material, which addresses both the moisture- and movement-related issues commonly seen with other exterior materials, creating a balance of performance and aesthetics that cannot be found with other manmade alternatives.
- Easy to cut, route, drill and mill.
- Resistant to rotting, cracking, splitting and virtually free from termites.
- Maintains a high level of dimensional stability during periods of moisture and temperature changes.
- Approved for ground contact.
- Does not require end-sealing, special adhesives or other cumbersome and costly installation techniques.
- Can be painted any color with exterior grade latex paint.



Part#	Description	Size	Length
BTE1416	Boral Truexterior Trim Board - Wood Grain/Smooth	1 x 4	16'
BTE1616	Boral Truexterior Trim Board - Wood Grain/Smooth	1 x 6	16'
BTE1816	Boral Truexterior Trim Board - Wood Grain/Smooth	1 x 8	16'
BTE11216	Boral Truexterior Trim Board - Wood Grain/Smooth	1 x 12	16'
BTE54416	Boral Truexterior Trim Board - Wood Grain/Smooth	5/4 x 4	16'
BTE54616	Boral Truexterior Trim Board - Wood Grain/Smooth	5/4 x 6	16'



Trim Board Texture



Bead Board Texture

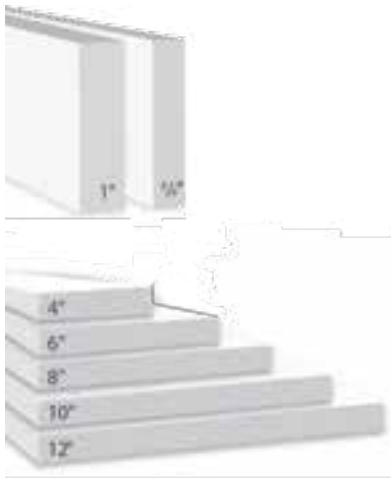


Boral Poly Ash Truexterior T&G Bead Boards

- Made with the revolutionary new poly-ash material, which addresses both the moisture- and movement-related issues commonly seen with other exterior materials, creating a balance of performance and aesthetics that cannot be found with other manmade alternatives.
- Edge and center bead or v groove profile.
- Easy to cut, route, drill and mill.
- Resistant to rotting, cracking, splitting and virtually free from termites.
- Maintains a high level of dimensional stability during periods of moisture and temperature changes.
- Approved for ground contact.
- Does not require end-sealing, special adhesives or other cumbersome and costly installation techniques.
- Can be painted any color with exterior grade latex paint.



Part#	Description	Size	Length
BTE58616BB	Boral Truexterior T&G Bead Board w/ 5" Reversible Face	5/8" x 6"	16'



Royal S4S Trimboard is reversible and available in a smooth/smooth or smooth/woodgrain finish.

Royal PVC Trim Boards

- Royal S4S Trimboard™ can be used in countless ways to trim a home and add long-lasting beauty and value. Its smooth, durable, 4-sided finish resists dirt buildup, while its “true square” edges provide cleaner installation. Reversible Royal S4S Trimboard comes ready to install, is paintable and is backed by a lifetime never rot warranty.
- Cannot be painted with dark colors.

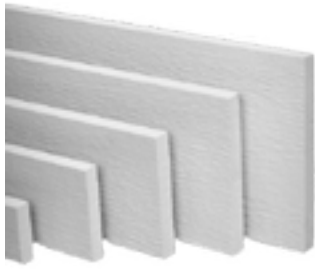
Part#	Description	Size	Act. Size	Length
TB44418	Royal PVC Trimboard - Reversible Woodgrain/Smooth	1 x 4	.75" x 3.5"	18'
TB44618	Royal PVC Trimboard - Reversible Woodgrain/Smooth	1 x 6	.75" x 5.5"	18'
TB44818	Royal PVC Trimboard - Reversible Woodgrain/Smooth	1 x 8	.75" x 7.25"	18'
TBS441018	Royal PVC Trimboard - Reversible Smooth/Smooth	1 x 10	.75" x 9.25"	18'
TBS441218	Royal PVC Trimboard - Reversible Smooth/Smooth	1 x 12	.75" x 11.25"	18'
TBS44418	Royal PVC Trimboard - Reversible Smooth/Smooth	1 x 4	.75" x 3.5"	18'
TBS44618	Royal PVC Trimboard - Reversible Smooth/Smooth	1 x 6	.75" x 5.5"	18'
TBS44818	Royal PVC Trimboard - Reversible Smooth/Smooth	1 x 8	.75" x 7.25"	18'
TBS54418	Royal PVC Trimboard - Reversible Smooth/Smooth	5/4 x 4	1" x 3.5"	18'
TBS54618	Royal PVC Trimboard - Reversible Smooth/Smooth	5/4 x 6	1" x 5.5"	18'
TBS54818	Royal PVC Trimboard - Reversible Smooth/Smooth	5/4 x 8	1" x 7.25"	18'
TBSS388	Royal PVC TrimBoard Sheetstock - S2S		0.375" x 48"	8'



PVC Bendable Brick Mould

- Bendable up to 180°.

Part#	Description	Act. Size	Length
TBBM125217	White WM 180 Bendable Brick Mould - PVC	1.25" x 2"	17'



James Hardie Fiber Cement Trim Boards - Non Stock

HardieTrim boards are perfect complements to your James Hardie® siding. Both products offer long-lasting protection from the elements, and a beautiful, natural look. James Hardie products are specifically engineered to withstand damage from moisture and rot, and will hold their own, come rain, sleet, or snow.

Part#	Description	Size	Act. Size	Length
FCT44412C	HardieTrim NT3 - Smooth	1 x 4	.75" x 3.5"	12'
FCT44612C	HardieTrim NT3 - Smooth	1 x 6	.75" x 5.5"	12'
FCT44812C	HardieTrim NT3 - Smooth	1 x 8	.75" x 7.25"	12'
FCT441012C	HardieTrim NT3 - Smooth	1 x 10	.75" x 9.25"	12'
FCT441212C	HardieTrim NT3 - Smooth	1 x 12	.75" x 11.25"	12'
FCT54412C	HardieTrim NT3 - Smooth	5/4 x 4	1" x 3.5"	12'
FCT54512C	HardieTrim NT3 - Smooth	5/4 x 5	1" x 4.5"	12'
FCT54612C	HardieTrim NT3 - Smooth	5/4 x 6	1" x 5.5"	12'
FCT54812C	HardieTrim NT3 - Smooth	5/4 x 8	1" x 7.25"	12'
FCT541012C	HardieTrim NT3 - Smooth	5/4 x 10	1" x 9.25"	12'
FCT541212C	HardieTrim NT3 - Smooth	5/4 x 12	1" x 11.25"	12'
FCTAA15412C	Artisan Accent HardieTrim NT3 - Smooth		1.5" x 4"	12'
FCTAA15412P	Artisan Accent HardieTrim NT3 - Smooth Primed		1.5" x 4"	12'
FCTAA15612C	Artisan Accent HardieTrim NT3 - Smooth		1.5" x 6"	12'
FCTAA15612P	Artisan Accent HardieTrim NT3 - Smooth Primed		1.5" x 6"	12'



James Hardie Fiber Cement Batten Strips - Non Stock

Rustic wood grain on front and smooth on the back.

Part#	Description	Size	Act. Size	Length
FCTBC	HardieTrim Batten Strips Rustic Grain/Smooth Color	1 x 3	.75" x 2.5"	12'
FCTBP	HardieTrim Batten Strips Rustic Grain/Smooth Primed	1 x 3	.75" x 2.5"	12'

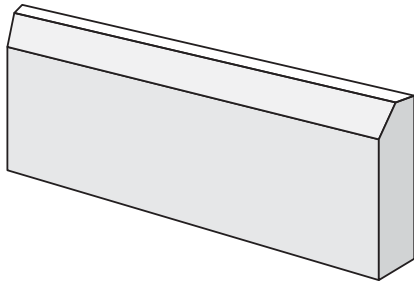
James Hardie Fiber Cement Crown Mould - Non Stock

Part#	Description	Size	Act. Size	Length
FCTCM44412C	HardieTrim Crown Mould - Fiber Cement	1 x 4	.75" x 3.25"	12'
FCTCM44612C	HardieTrim Crown Mould - Fiber Cement	1 x 6	.75" x 5.25"	12'



James Hardie Corner Trim - Non Stock

Part#	Description
FCTFT3	3.0 HardieTrim Corner Tabs - Full Case Only
FCTCT5.5	5.5 HardieTrim Corner Tabs - Full Case Only
FCTCT8	8.0 HardieTrim Corner Tabs - Full Case Only



James Hardie Fiber Cement Skirt Board - Non Stock

Part#	Description	Act. Size	Length
FCTSK54C	HardieTrim 5/4 Skirt Board - Fiber Cement	2.62" x 1"	16'



James Hardie PVC Brick Mould - Non Stock

Part#	Description	Act. Size	Length
FCTBRIMC	HardieTrim Brick Mould - PVC	1.25" x 2"	17'



James Hardie PVC Bed Mould - Non Stock

Part#	Description	Act. Size	Length
FCTBEDMC	HardieTrim Bed Mould - PVC	1.63" x .5"	16'



James Hardie PVC Base Cap Mould - Non Stock

Part#	Description	Act. Size	Length
FCTBCC	HardieTrim Base Cap - PVC	1.13" x .67"	16'



James Hardie PVC Drip Cap - Non Stock

Part#	Description	Act. Size	Length
FCTDCC	HardieTrim Drip Cap - PVC	1.63" x .67"	16'



James Hardie PVC Rams Crown - Non Stock

Part#	Description	Act. Size	Length
FCTRCC	HardieTrim Rams Crown - PVC	2" x 1.4"	16'



James Hardie PVC Rake Mould - Non Stock

Part#	Description	Act. Size	Length
FCTPMC	HardieTrim Rake Mould - PVC	2" x .63"	16'



James Hardie PVC Historic Sill - Non Stock

Part#	Description	Act. Size	Length
FCTHSC	HardieTrim Historic Sill - PVC	1.93" x 1.75"	16'



James Hardie PVC Shingle Mould - Non Stock

Part#	Description	Act. Size	Length
FCTSMC	HardieTrim Shingle Mould - PVC	1.63" x .61"	16'



James Hardie PVC Sub Sill - Non Stock

Part#	Description	Act. Size	Length
FCTSSC	HardieTrim Sub Sill - PVC	1.49" x 1.5"	16'