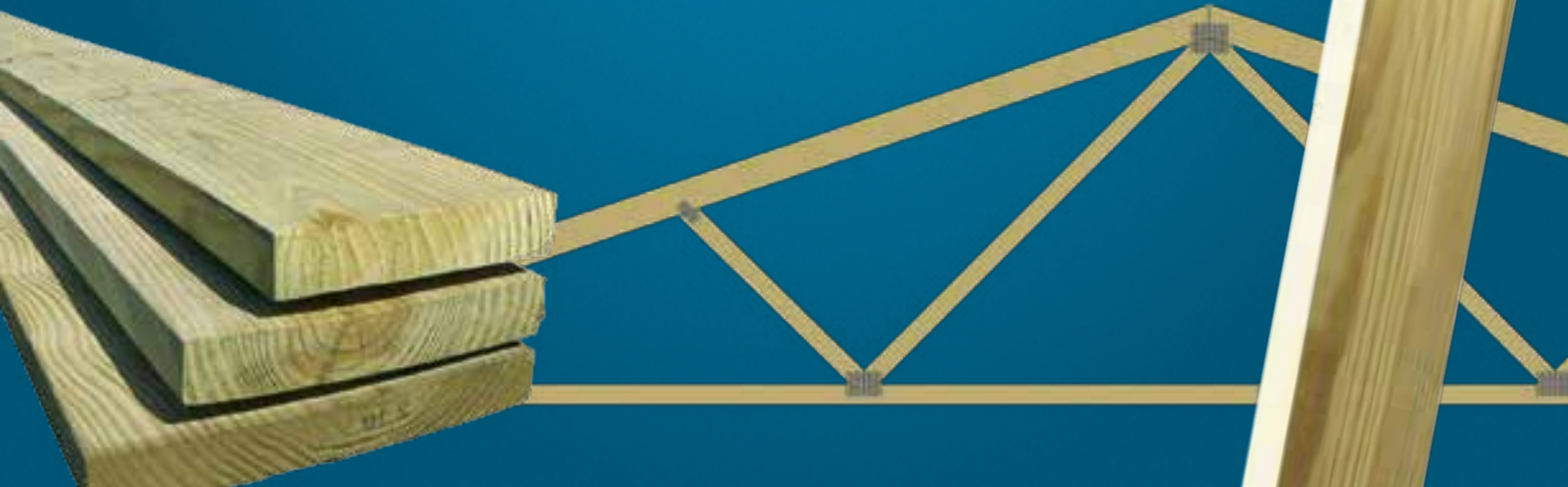


# *Lumber, Posts, & Trusses*



# Lumber, Posts, & Trusses Table of Contents

LVL Headers.....	LPT3	Plywood and OSB .....	LPT6
#2 White Pine.....	LPT3	T1-11 .....	LPT6
Eastern White Pine Rough Sawn .....	LPT3	Rough Cut .....	LPT7
Treated Yellow Pine .....	LPT3	Furring Lath .....	LPT7
#1 Yellow Pine.....	LPT4	Yellow Pine Stair Treads.....	LPT7
#2 Yellow Pine.....	LPT4	Glue Laminated SYP Posts.....	LPT7
Yellow Pine Machine Stress Rated .....	LPT4	The Green Post .....	LPT7
Spruce/Pine/Fir Dimensional Lumber .....	LPT4	Standard Truss (in-stock).....	LPT8
Shiplap Rough Sawn .....	LPT5	Attic Truss .....	LPT8
Tongue & Groove Barn Siding .....	LPT5	Scissors Truss.....	LPT8
Tongue & Groove Yellow Pine.....	LPT5	Gambrel Truss.....	LPT8
Treated Tongue & Groove Yellow Pine .....	LPT5	Mono Truss .....	LPT8
Fir .....	LPT5		



## LVL Headers

Available in 2' increments

Part#	Description	Size	Lengths
LVL95**	LVL Header	1-3/4" x 9-1/2"	8' - 48'
LVL1178**	LVL Header	1-3/4" x 11-7/8"	8' - 38', and 48'
LVL14**	LVL Header	1-3/4" x 14"	8' - 38', and 48'
LVL16**	LVL Header	1-3/4" x 16"	8' - 36', and 48'
LVL18**	LVL Header	1-3/4" x 18"	8' - 32', 36', and 48'

LVL Headers



## #2 White Pine

Part#	Description	Size	Lengths
L14***	#2 White Pine Board	1" x 4"	10', 12', and 16'
L16**	#2 White Pine Board	1" x 6"	6', 10', 12', and 16'
L18**	#2 White Pine Board	1" x 8"	12' and 16'
L110**	#2 White Pine Board	1" x 10"	12' and 16'
L112**	#2 White Pine Board	1" x 12"	12' and 16'

WP Boards



## Eastern White Pine Rough Sawn

Available in 2' increments

Part#	Description	Size	Lengths
L110**RS	EWP S1S RS Siding	1" x 10"	10' - 16'
L112**RS	EWP S1S RS Siding	1" x 12"	8' - 16'

Rough Sawn



## Treated Yellow Pine

Available in 2' increments

Part#	Description	Size	Lengths
LT1412	Treated Yellow Pine	1" x 4"	12'
LT1612	Treated Yellow Pine	1" x 6"	12'
LT546**	Standard Treated Yellow Pine	1.25" x 6	10' - 16'
LT546161	Premium Treated Yellow Pine	1.25" x 6	16'
LT24**	Treated Yellow Pine	2" x 4"	8' - 16'
LT26**	Treated Yellow Pine	2" x 6"	8' - 16', and 20'
LT26**GC	Treated Yellow Pine Ground Contact	2" x 6"	10' - 16'
LT28**	Treated Yellow Pine	2" x 8"	8' - 16', and 20'
LT28**GC	Treated Yellow Pine Ground Contact	2" x 8"	10', 12', and 16'
LT210**	Treated Yellow Pine	2" x 10"	8' - 16', and 20'
LT210**GC	Treated Yellow Pine Ground Contact	2" x 10"	10', 12', and 16'
LT212**	Treated Yellow Pine	2" x 12"	10', 12', 16', and 20'
LT212**GC	Treated Yellow Pine Ground Contact	2" x 12"	10' and 16'

Treated YP

## Yellow Pine



### #1 Yellow Pine

Available in 2' increments

Part#	Description	Size	Lengths
LYP210	#1 Yellow Pine	2" x 4"	16'
LYP26**	#1 Yellow Pine	2" x 6"	10' - 20'
LYP28**	#1 Yellow Pine	2" x 8"	10' - 24'
LYP210**	#1 Yellow Pine	2" x 10"	10' - 24'
LYP212**	#1 Yellow Pine	2" x 12"	10' - 24'

### #2 Yellow Pine

Available in 2' increments

Part#	Description	Size	Lengths
LYP26**	#2 Yellow Pine	2" x 6"	10' - 16'
LYP28**	#2 Yellow Pine	2" x 8"	10' - 16'

### Yellow Pine Machine Stress Rated

Part#	Description	Size	Lengths
LMSR210**	Yellow Pine MSR	2" x 10"	12' - 20'
LMSR212**	Yellow Pine MSR	2" x 12"	10' - 20'

### Spruce/Pine/Fur Dimensional Lumber

Available in 2' increments

Part#	Description	Size	Lengths
L23**	SPF	2" x 3"	8', 12', and 16'
L249258	SPF	2" x 4"	92-5/8"
L2410458	SPF	2" x 4"	104-5/8"
L24**	SPF	2" x 4"	8' - 20'
L269258	SPF	2" x 6"	92-5/8"
L2610458	SPF	2" x 6"	104-5/8"
L26**	SPF	2" x 6"	8' -20'
L28**	SPF	2" x 8"	8' - 20'
L210**	SPF	2" x 10"	8' - 20'
L212**	SPF	2" x 12"	12' - 18'

## MSR



## Dimensional



## Shiplap

## T&G Barn Siding

## T&G Yellow Pine

## Fir



### Shiplap Rough Sawn

Part#	Description	Size	Length
L11010SL	RS Shiplap	1" x 10"	10'
L11012SL	RS Shiplap	1" x 10"	12'
L11016SL	RS Shiplap	1" x 10"	16'



### Tongue & Groove Barn Siding

Available in 2' increments

Part#	Description	Size	Lengths
L16**TG	T&G Barn Siding	1" x 6"	8' - 16'
L18**TG	T&G Barn Siding	1" x 8"	8' - 16'



### Tongue & Groove Yellow Pine

Available in 2' increments

Part#	Description	Size	Lengths
LYP26**TG	#2 T&G Yellow Pine	2" x 6"	10' - 16'
LYP28**1TG	#1 T&G Yellow Pine	2" x 8"	10' - 16'
LYP28**TG	#2 T&G Yellow Pine	2" x 8"	10' - 16'

### Treated Tongue & Groove Yellow Pine

Available in 2' increments

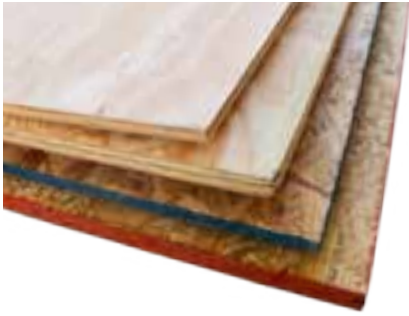
Part#	Description	Size	Lengths
LT26**TG	Treated T&G Yellow Pine	2" x 6"	10' - 16'
LT28**TG	Treated T&G Yellow Pine	2" x 8"	12' and 16'



### Fir

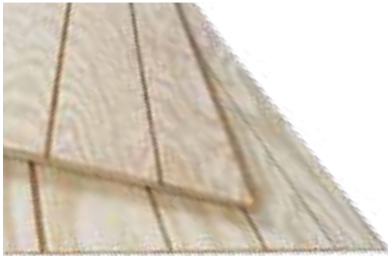
Part#	Description	Size	Lengths
L2622	Hem Fir	2" x 6"	20'
L2624	Hem Fir	2" x 6"	24'
L2822	Hem Fir	2" x 8"	20'
L2824	Hem Fir	2" x 8"	24'
L21022	Hem Fir	2" x 10"	20'
L21024	Hem Fir	2" x 10"	24'
L21222	Hem Fir	2" x 12"	20'
L21224	Hem Fir	2" x 12"	24'
L21026	Douglas Fir	2" x 10"	26'
L21226	Douglas Fir	2" x 12"	26'





## Plywood and OSB

Part#	Description	Size	Thickness
L14P	Lauan Plywood	4' x 8'	1/4"
L38P	Yellow Pine Plywood CDX	4' x 8'	3/8"
L124P	4-ply Yellow Pine Plywood CDX	4' x 8'	1/2"
L124PFIR	4-ply Fir Plywood CDX	4' x 8'	1/2"
L58P	Yellow Pine Square Edge Plywood CDX	4' x 8'	5/8"
L58PF	Fir Square Edge Plywood CDX	4' x 8'	5/8"
L34P	Square Edge Plywood CDX	4' x 8'	3/4"
L58TG	Tongue & Groove Plywood UL	4' x 8'	5/8"
L34TG	Tongue & Groove Yellow Pine Plywood UL	4' x 8'	3/4"
L34PTGF	Tongue & Groove Fir Plywood UL	4' x 8'	3/4"
L12PBC	Plywood B C (sanded one side)	4' x 8'	1/2"
L34PBC	Plywood B C (sanded one side)	4' x 8'	3/4"
L12PT	Treated Plywood	4' x 8'	1/2"
L34PT	Treated Plywood	4' x 8'	3/4"
L716O	OSB	4' x 8'	7/16"
L716O9	OSB	4' x 9'	7/16"
L12O	OSB	4' x 8'	1/2"
L58O	OSB	4' x 8'	5/8"
L34OG	Top Notch Tongue & Groove OSB	4' x 8'	3/4"
L34OTGGOLD	Gold Edge T&G OSB	4' x 8'	3/4"
L34OA	Advantech T&G OSB	4' x 8'	3/4"
L12OZ	Zip System OSB	4' x 8'	1/2"



## T1-11

Part#	Description	Size	Thickness
LT111	T1 11 Yellow Pine Plywood Siding	4' x 8'	5/8"
LT111FIR10	T1 11 Fir Plywood Siding	4' x 10'	5/8"



## Rough Cut

Available in 2' increments

Part#	Description	Size	Length
LYP1416	Southern Yellow Pine Rough Cut	1" x 4"	16'
L1416RCSP	Spruce Rough Cut	1" x 4"	16'

Rough Cut



## Furring Lath

Part#	Description	Size	Length
L138	Furring Lath	1" x 3"	8'
L1312	Furring Lath	1" x 3"	12'
L1316	Furring Lath	1" x 3"	16'

Furring Lath



## Yellow Pine Stair Treads

• Rounded one side

Part#	Description	Size
LYPTRE12	Yellow Pine Treads	5/4" x 12" x 12'
LYPTRE16	Yellow Pine Treads	5/4" x 12" x 16'

Stair Treads



## Glue Laminated SYP Posts

Available in 2' increments • Southern Yellow Pine.

Part#	Description	Size	Lengths
LGL6**	3-ply Glu-Lam Post - w/ Bottom 6' Treated	2 x 6"	12' - 32'
LGL8**	3-ply Glu-Lam Post - w/ Bottom 6' Treated	2 x 8"	16' - 32'
LGL46**	4-ply Glu-Lam Post - w/ Bottom 6' Treated	2 x 6"	14' - 32'
LGL48**	4-ply Glu-Lam Post - w/ Bottom 6' Treated	2 x 8"	16' x 40'
LGLFT**	3-ply and 4-ply Glu-Lam Post - Fully Treated	*	8' - 40'

Many 2-ply, 4-ply, and 5-ply Glu-lams also available for special order in many lengths

Glulam Posts



## The Green Post

The most affordable In-Ground Solution to Post Decay. Provides superior protection from the harmful effects of concrete, rot & decay, corrosive soils agents, soil nutrients, moisture, and oxygen. Available in 2' increments • Southern Yellow Pine with bottom 6' treated

Part#	Description	Size	Lengths
LGLPS6**	Green Post - 3-ply Glu-Lam	2 x 6"	14' - 28'
LTPS46**	Green Post - Fully Treated	4" x 6"	12' - 18'
LTPS6616	Green Post - Fully Treated	6" x 6"	16'

Many 3-ply, 4-ply, and 5-ply Green Posts also available for special order in many lengths

Green Post

## Standard Truss



### Standard Truss (in-stock)

- Designed to be installed 4' on center
- 110 MPH wind load and 30-5-5 pound load rating with no deductions
- Other custom order trusses are available with varying lead times

Part#	Description	Pitch	Length
TRU20	Standard Truss - 4' O/C - 10-1/2" T/C - O/H	4/12	20'
TRU24	Standard Truss - 4' O/C - 10-1/2" T/C - O/H	4/12	24'
TRU26	Standard Truss - 4' O/C - 10-1/2" T/C - O/H	4/12	26'
TRU28	Standard Truss - 4' O/C - 10-1/2" T/C - O/H	4/12	28'
TRU30	Standard Truss - 4' O/C - 10-1/2" T/C - O/H	4/12	30'
TRU32	Standard Truss - 4' O/C - 10-1/2" T/C - O/H	4/12	32'
TRU36	Standard Truss - 4' O/C - 10-1/2" T/C - O/H	4/12	36'
TRU40	Standard Truss - 4' O/C - 10-1/2" T/C - O/H	4/12	40'
TRU50	Standard Truss - 4' O/C - 10-1/2" T/C - O/H	3.75/12	50'
TRUSO	Special Order Truss		

## S/O Trusses



### Attic Truss

Part#	Description
TRUSO	Special Order Truss



### Scissors Truss

Part#	Description
TRUSO	Special Order Truss



### Gambrel Truss

Part#	Description
TRUSO	Special Order Truss



### Mono Truss

Part#	Description
TRUSO	Special Order Truss