

Discover the Strength and Durability of

TRUSSCORE™

PVC Interlocking Liner Panel

FOR ALL APPLICATIONS

- Agricultural
- Commercial
- Industrial
- Residential



Wherever you need a smooth finish that is easy to clean, low maintenance and abuse resistant, TRUSSCORE PVC Sanitary Wall and Ceiling Panel has your project covered.

TRUSSCORE PVC Interlocking Liner Panels are designed to exceed your most demanding expectations. They meet and/or exceed modern hygienic construction and statutory building codes; and are transforming construction practices in Canada and the United States.

TRUSSCORE PVC Interlocking Liner Panels have your job covered. Wherever you need easy-to-clean, low maintenance hygienic or abuse resistant paneling

Dairy, Hog, and Poultry Farms
Home Ceiling / Wall Panels
Kennels
Riding Stables
Marinas
Fisheries
Food Processing Plants

Chemical Processing Plants
Meat Packaging Facilities
Restaurant Kitchens
Supermarkets
Laboratories
Theme Parks
Car Washes

Breweries
Nursing Homes
Health Care Facilities
Public Bathrooms
Refrigerated Warehouses
Schools
Laundromats

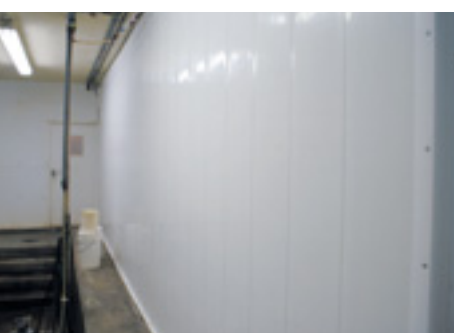
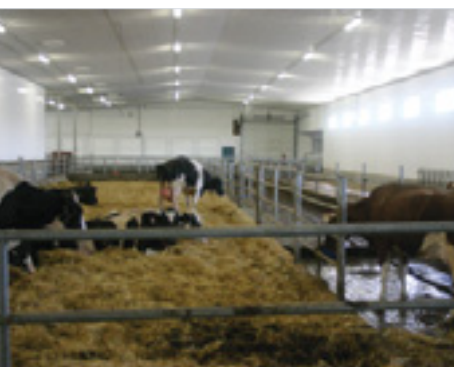
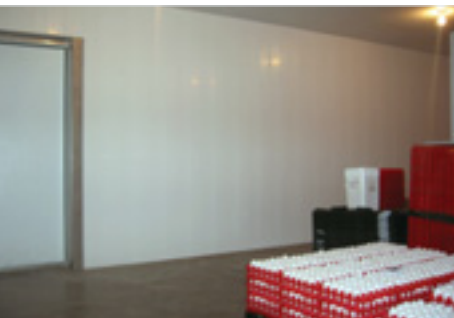
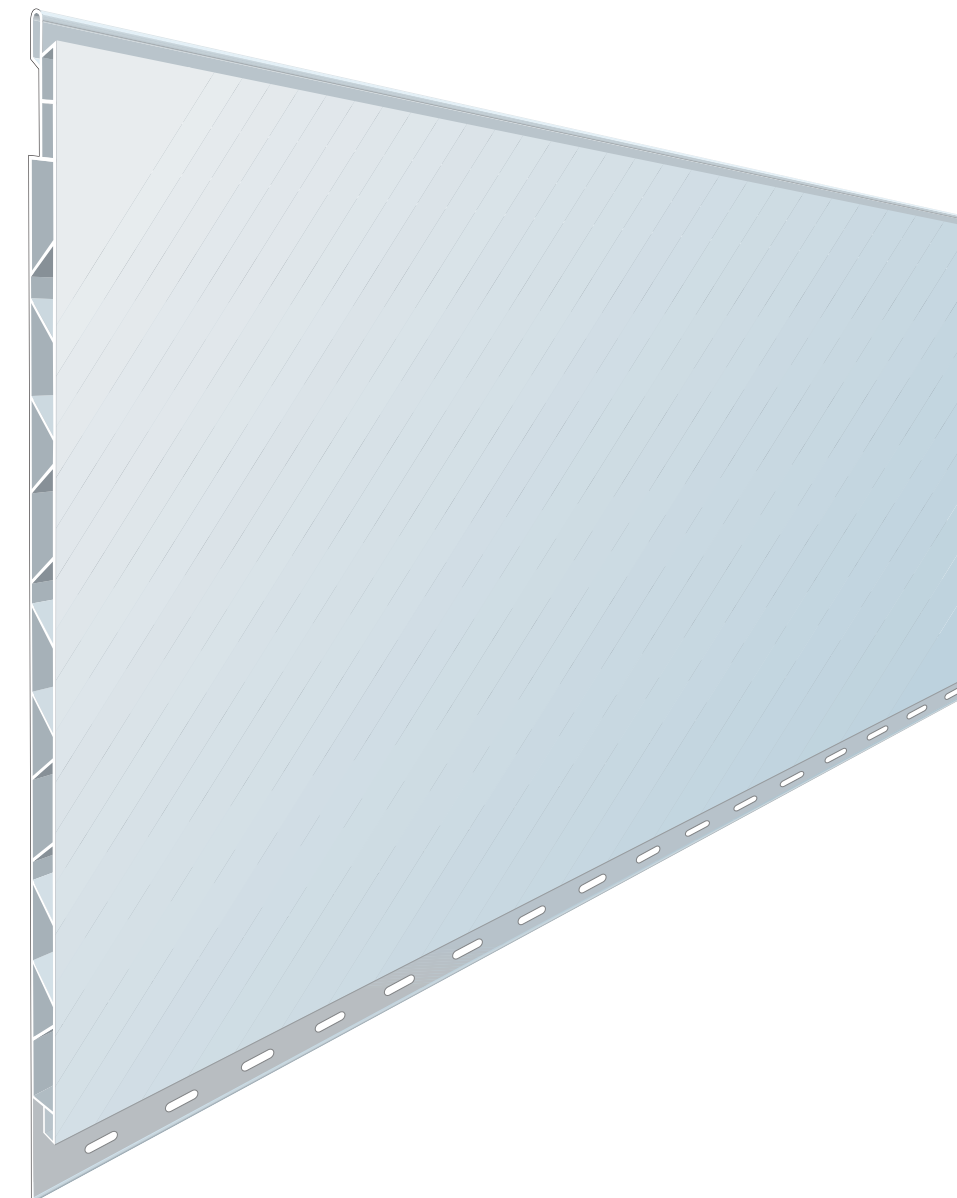
KEY ADVANTAGES INCLUDE:

- Bright clean appearance
- Virtually maintenance free – Just wipe it clean
- Meets CFIA and FDA requirements for walls and ceilings
- Comes in standard and custom lengths
- Corrosion-resistant
- Economical, excellent investment
- Hidden fasteners
- High strength to weight ratio
- Highly resistant to moisture and most chemicals
- Ideal replacement for conventional wall systems
- Inner truss design for rigidity and strength
- Lightweight, fast easy installation
- Potential insurance savings
- Supports attic insulation loads
- Pre-punched nailing flange

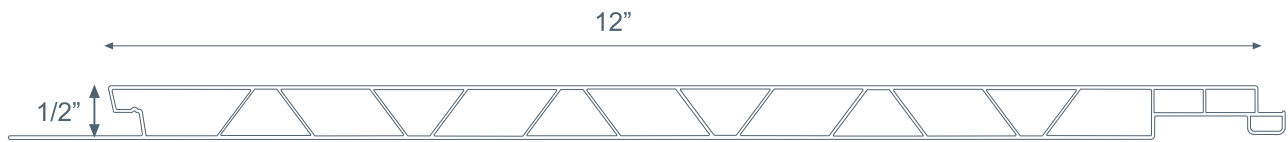
TRUSSCORE'S unique webbed design provides outstanding spanning capability as well as high-strength.

TRUSSCORE'S surface is highly durable and resistant to scratches, chemicals and moisture.

TRUSSCORE PVC Interlocking Liner Panel comes in standard 10-, 12- and 16-foot lengths. Custom lengths are available.



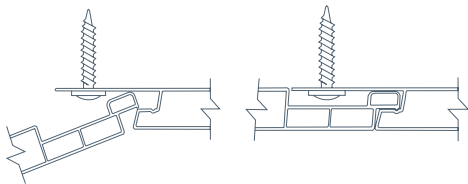
SPECIFICATIONS



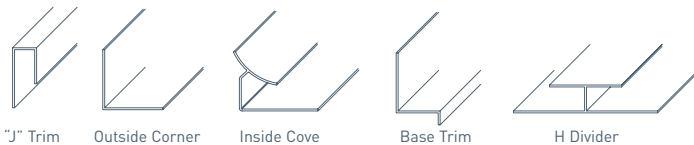
- TRUSSCORE PVC Interlocking Liner Panel comes in standard 10-, 12- and 16-foot lengths.
- Custom lengths are available.

Trusscore's unique tongue-and-groove interlocking system makes both vertical and horizontal installation quick and easy.

Fastener Detail



Trims and Flashing



RATINGS

- Class A fire rating as per ASTM E84 (Flame spread = 25)
- Meets CFIA and FDA requirements for walls and ceilings

See our website www.domtek.ca or your local dealer for details.



P.O. Box 20078
Brandon, Manitoba, R7A 6Y8
Fax: 1-800-265-6001
Toll Free Phone: 1-800-665-1027
www.domtek.ca

Dealer:

