

*Post Frame
Buildings*



A. B. MARTIN
ROOFING SUPPLY, LLC

Roofing & Siding • Hardware • Lumber



www.abmartin.net

Residential



Light Stone sides, and Evergreen roof, trim, and wainscot

Need more storage?

Extend the life of your car, boat, RV, or other valuables by keeping them out of the weather and in an A.B. Martin post frame building. We supply contractors and home owners with complete post frame building packages, custom designed to meet your storage needs.

Many options, styles, and colors available.

NOTE: Colors may vary in appearance from actual metal. Ask for one of our color charts for more accurate color samples.

Residential



Ash Gray roof, Bone White trim, and Scarlet Red sides



Light Stone roof, Beige sides



Red roof, and Wood sides and trim



Clay trim and wainscoting, Light Stone sides



Scarlet Red sides, Charcoal roof, trim, and wainscoting



Brite White roof and trim, and Red sides



Clay roof, Bronze trim & wainscoting, & Light Stone sides



Bone White sides, Scarlet Red wainscoting and trim



Clay roof, Beige trim, and sides

NOTE: Colors may vary in appearance from actual metal. Ask for one of our color charts for more accurate color samples.

Agricultural



Evergreen roof and Light Stone sides

It beat the rain... now keep it dry!

Post frame construction designs allow for larger buildings at lower material and labor costs than traditional timber framing techniques.

Developed and matured in the 1930's, post frame agricultural buildings come in all shapes and sizes and are the time-tested, cost-effective method for protecting your equipment from the weather.

NOTE: Colors may vary in appearance from actual metal. Ask for one of our color charts for more accurate color samples.

Agricultural



Brite White roof and trim, and Red sides



Bronze trim and doors, Tan sides



Brite White roof and trim, and Scarlet Red sides



Beige walls, and Brown trim and wainscoting



Brite White roof, Pewter Gray trim, and Red sides



Brite White roof and trim, and Scarlet Red sides



Brite White trim and Scarlet Red sides



Black roof and trim, and Bone White sides



Red sides and Bone White trim

NOTE: Colors may vary in appearance from actual metal. Ask for one of our color charts for more accurate color samples.

Agricultural



Light Stone roof and trim, and Red sides

Your stock is growing...

And if you need a post frame building to keep up with your growing livestock, A.B. Martin is here to help!

Our post frame specialist will work with you to design a custom barn, lean-to, or shelter that is perfect for your needs and budget.

NOTE: Colors may vary in appearance from actual metal. Ask for one of our color charts for more accurate color samples.

Agricultural



Brite White roof and trim, and Red sides



Brite White roof and trim & Red sides



Light Stone sides and Brown trim



Light Stone sides, and Evergreen roof and trim



Bone White sides, Evergreen roof, trim, wainscoting



Galvalume roof, Black trim, and Scarlet Red sides



Brite White trim and Wood sides



Brite White roof, Light Stone sides, and Bronze trim



White roof, Beige sides, Red wainscoting and trim



Brite White sides and Black trim



Light Stone roof and sides, and Black trim



Brite White sides and Black trim

NOTE: Colors may vary in appearance from actual metal. Ask for one of our color charts for more accurate color samples.

Equine



Clay roof, Brite White trim, and Scarlet Red sides

Your horse wants to be warm and dry.

Post frame construction is great for indoor riding arenas, horse barns, or horse shelters.

A.B. Martin also carries a full line of quality horse stall components to outfit your barn.

NOTE: Colors may vary in appearance from actual metal. Ask for one of our color charts for more accurate color samples.



Bright Red roof and wainscoting, Light Stone sides

Equine



Light Stone sides, Evergreen roof and trim



Medium Bronze A.B. Seam roof and Clay sides



Red sides, and Brite White roof, trim and wainscoting



Classic Green A.B. Seam roof and Wood sides



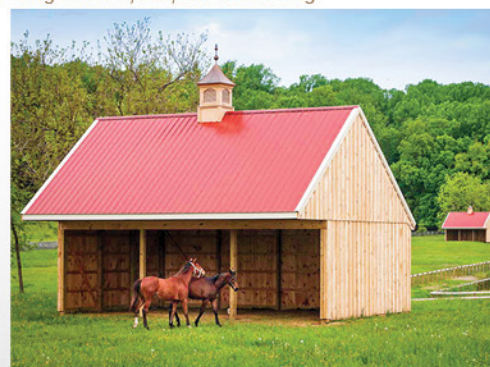
Light Stone sides, Evergreen roof, trim, and wainscoting



Brite White trim and Wood sides



Light Stone roof and trim, and Evergreen sides



Scarlet Red roof, Brite White trim, Wood sides

NOTE: Colors may vary in appearance from actual metal. Ask for one of our color charts for more accurate color samples.

Commercial



Classic Green A.B. Seam roof

Great for your office, store, or shop!

A cost-effective solution to all your light-commercial building needs. A popular choice for commercial storage units and auto shops.

NOTE: Colors may vary in appearance from actual metal. Ask for one of our color charts for more accurate color samples.

Commercial



Ash Gray roof, Bone White trim, and Red sides



Ash Gray roof, Brite White sides & wainscoting, & Red sides



Burgundy AB Seam roof and Light Stone sides



Slate Blue roof, trim, and wainscoting, and Bone White sides



Galvalume roof and Bone White sides



Brite White sides, Scarlet Red roof trim and wainscoting

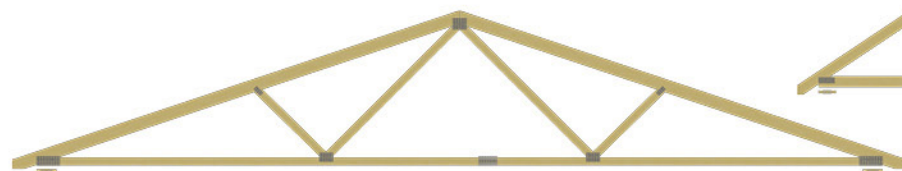


Bone White sides, Charcoal roof, trim, and wainscoting

NOTE: Colors may vary in appearance from actual metal. Ask for one of our color charts for more accurate color samples.

Options

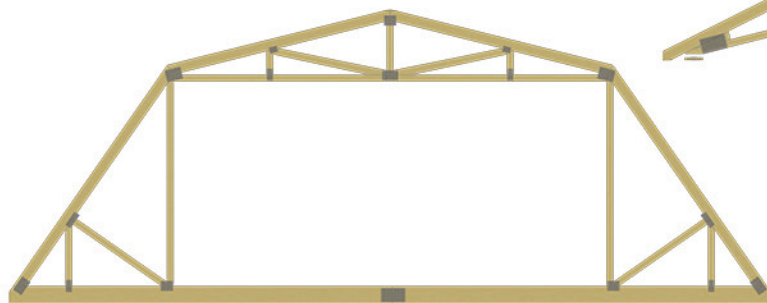
All standard in-stock trusses are $\frac{4}{12}$ pitch with a 12" overhang. They are designed to be installed 4' on center. They have a 110 MPH wind load and 30-5-5 pound load rating with no deductions. The lengths in stock are as follows: 20', 24', 28', 30', 32', 36', 40', 50'. Other optional custom order trusses are available.



Standard Truss (In Stock)



Attic Truss
Great for extra storage space.



Gambrel Truss
Available with attic room for even greater storage space.



Scissors Truss
Gives added ceiling height.



Mono Truss
Great for lean-to or Run-in sheds.



 **Snow**  **DEFENDER** TM

Snow Defender's stainless steel snow guards provide long lasting protection against melting snow. Easy to install. No caulking needed. Available in multiple colors.

Options

A.B. Martin is a supplier of the **Green Post**. The Green Post provides superior protection against in ground post decay and rot. Patented notch design provides superior wind uplift resistance. Environmentally friendly. Prevents the preservative chemicals in treated post from entering the soil.

There are several options when choosing posts. Normally when the post is 16' or less it is more economical to use a solid 4"x6" or a 6"x6" treated post. Otherwise it is recommended to use a **GluLam** laminated post. GluLam posts have consistent dimensions, are straighter, and available in longer lengths (up to 40') than a solid sawn post. GluLams are also resistant to twisting, splitting, and checking. GluLams are pressure treated on the bottom 6' only and Southern Yellow Pine on top.



A.B. Martin Cupolas

Available in 2', 3', and 4' square. Custom made to match color and roof pitch of your building. Windows are optional in 3', and 4' cupolas. Pre-assembled for easy installation. Many weather vanes in stock.



Sturdi-Wall Drill Set Brackets

Heavy duty, drill-set anchor system. Designed to connect post frame structures to existing traditional concrete foundations.



Perma-Columns

5ft. precast concrete columns that keep wood out of the ground. The economy of post frame construction with the durability of concrete.



Sturdi-Wall Plus Wet Set Brackets

Heavy duty, wet-set anchor system designed to connect post frame structures to traditional concrete foundations.

*A Leading Manufacturer and Supplier
of **Post Frame Building Materials**,
Metal Roofing and **Siding***



A. B. MARTIN
ROOFING SUPPLY, LLC

Roofing & Siding • Hardware • Lumber



ABM Metal Panels

Premium 29^{ga}. Steel

Our premium panel is at the upper end of the 29^{ga}. tolerance.

Heavy Zinc Coatings

More Zinc means more rust protection.

Excellent Paint Bond

Premium G-100 - Zinc Phosphate makes for a strong paint bond and better corrosion protection.

Manufacturer Paint Warranties

Premium G-100 - Has 40 year Valspar paint warranty + 10 year edge rust warranty.

Heat Formed Panels

We Pre-Heat the coil prior to rollforming. This will reduce the paint cracking on the outside bends.

Large Minor Ribs

Strengthens the panel and improves the looks.





Are You Ready for Cold Weather?
Don't Wait. Insulate!



THE PINK PANTHER™ & © 1964-2015 Metro-Goldwyn-Mayer Studios Inc. All Rights Reserved. The color PINK is a registered trademark of Owens Corning.



AG-TUF®/AG-TUF UV®
Corrugated PVC Liner Panel



AG-TUF corrugated PVC liner panel allows efficient cladding of structures with many benefits for all types of agricultural professionals. From hog barns to dairy sheds, from poultry houses to milk houses and more, **AG-TUF** and **AG-TUF UV** hold up where other products won't. Ag-Tuf's resistance to chemicals allows for frequent cleaning and sanitary maintenance, as well as extended service in harsh chemical environments. AG-TUF panels are extremely easy to install and maintain using ordinary tools, while preserving their attractive glossy appearance over a long period of time.

DISCOVER THE STRENGTH AND DURABILITY OF TRUSSCORE

Wherever you need a smooth, hygienic, abuse resistant finish that is easy to clean and maintain, **TRUSSCORE** PVC Wall and Ceiling Panel has your project covered.

TRUSSCORE PVC WALL AND CEILING PANELLING IS THE PERFECT ALTERNATIVE TO:

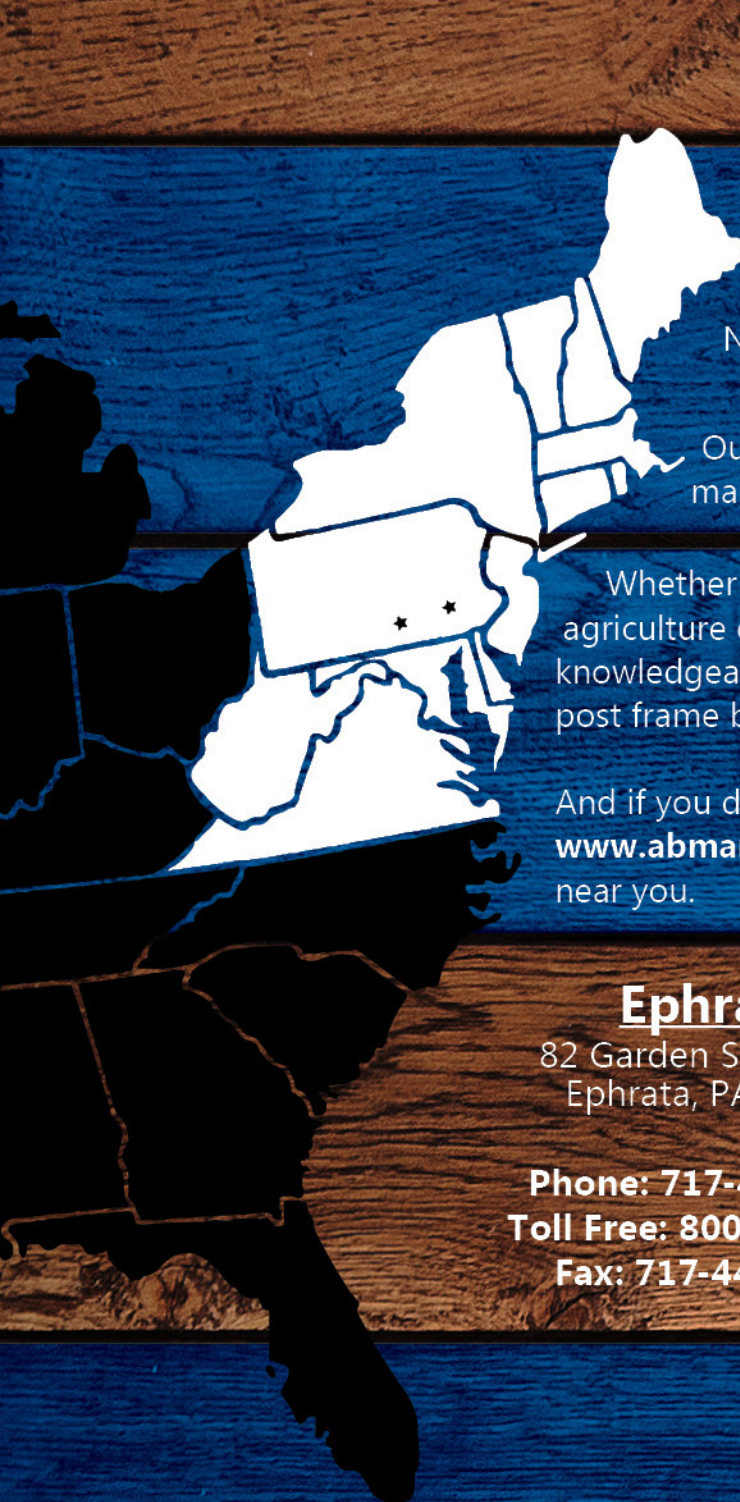
- Painted drywall
- Plywood
- Plasterboard
- Tiled concrete
- Lightweight PVC siding
- Stainless steel paneling

EASY TO INSTALL INTERLOCKING DESIGN
WON'T SUPPORT BACTERIA OR MOLD
EXTREMELY DURABLE WITH A CLASS ONE FIRE RATING
10-YEAR LIMITED WARRANTY

TRUSSCORE™



Options

A white outline map of the Northeast United States, including Pennsylvania, New York, Maine, Vermont, New Hampshire, Connecticut, Massachusetts, Rhode Island, New Jersey, Delaware, Maryland, Virginia, and West Virginia. The map is set against a dark blue background with a wood grain texture.

At **A.B. Martin Roofing Supply**, we provide quality complete post frame building, roofing & siding packages to Pennsylvania, New York, Maine, Vermont, New Hampshire, Connecticut, Massachusetts, Rhode Island, New Jersey, Delaware, Maryland, Virginia, and West Virginia.

Our professional service, quality material, FAST turn-around is the reason many home owners and contractors turn to us for all of their building needs.

Whether you're looking for a garage, horse barn, riding arena, animal shelter, agriculture or commercial building, we provide the complete package. We have a knowledgeable sales team that can help you choose the right metal panel or design a post frame building.

And if you don't have the time or ability to build your own building, visit our website, **www.abmartin.net**, and click on the *Contractor Locator* button to find a contractor near you.

Ephrata

82 Garden Spot Road
Ephrata, PA 17522

Phone: 717-445-6885
Toll Free: 800-373-3703
Fax: 717-445-7893

Newville

35 Ridge Road
Newville, PA 17241

Phone: 717-776-5951
Toll Free: 800-782-2712
Fax: 717-776-0112

www.abmartin.net



Watch a post frame building being built
(5 days in 5 minutes!)