

SUNLITE®

SUNLITE features the incredible strength and impact resistance of polycarbonate, but also benefits from an air layer that dramatically increases its insulation characteristics. This yields a strong, insulating, lightweight, attractive sheet that's perfect for many DIY applications.

- Conservatories
- False ceilings
- Seed boxes
- Basement windows
- Room dividers and partitions
- Breezeways
- Glazing
- Sun rooms
- Greenhouses
- Skylights
- Covered walkways
- Swimming pool enclosures



SUNLITE® POLYCARBONATE MULTIWALL PANELS 10-Year Limited Warranty*

SUNLITE is warranted for 10 years against hail damage, weathering, yellowing and loss of light transmission. The above warranty shall apply only if the panels are installed, used and maintained in accordance with Palram recommendations and specifications.

*Visit PalramAmericas.com for complete warranty details or call 800-999-9459.

Distributed by:



PALRAM AMERICAS
9735 Commerce Circle
Kutztown, PA, 19530 USA
Tel: 800.999.9459
palramamericas@palram.com



Form 1211 - 5-29-13 PBW

©2011-2015 SUNLITE is a trademark of PALRAM.

www.PalramAmericas.com



www.PalramAmericas.com

SUNLITE® Polycarbonate Multiwall Panels



SUNLITE®

Available in Two Colors*
& Two Light Transmission Levels

Accessories to
Complete Your Project

Beauty, Durability, & UV Protection

- Blocks 100% of harmful UV rays
- Good fire performance rating
- Excellent thermal insulation
 - High impact resistance
 - Virtually unbreakable
 - Rigid & light weight
 - Easy to work with

Regulatory Code Compliance Certification

Organization	Standard	Classification
CCMC	NBC 2010 (Canopy Covering)	Compliant (CCMC Eval. Rep. 13450-R)
ICC (Int'l Code Council)	IBC 2006 (Light Transmitting Plastics)	ESR-1893

For detailed information on physical properties, please
visit www.PalamAmericas.com/Sunlite



Clear
84% Light
Transmission



Opal White*
35% Light
Transmission

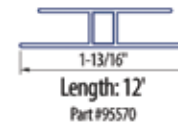
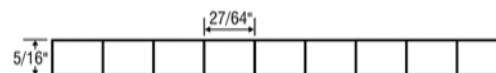
*Special order color. Minimums apply.

3 Standard Sizes

48" W x 96" L 48" W x 120" L 48" W x 144" L

Note: Fluting runs top to bottom in the "length" dimension.

8 MM Profile Dimensions



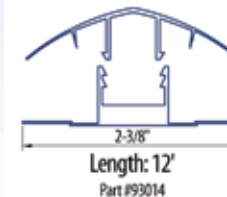
"H" Channel

A clear connector used to join two panels in vertical glazing applications.



"U" Channel

A clear connector used to cap either a "fluted" or "non-fluted" edge for a clean, finished look.



2 Piece Base and Cap Connector

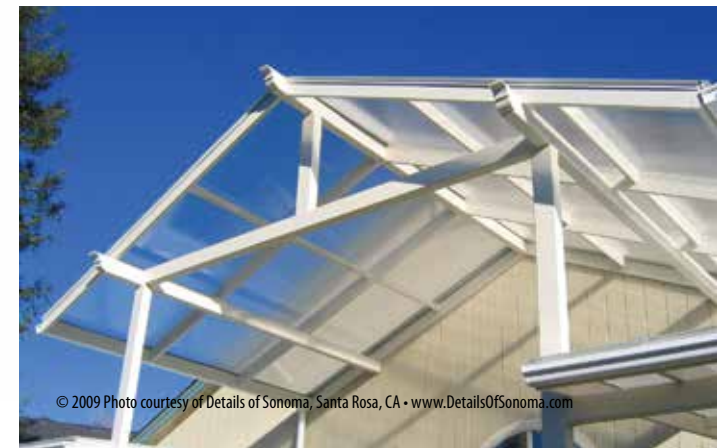
Clear base attaches to continuous wood or steel in sloped or vertical applications and then the cap is snapped in place.



Edge Seal Tape AntiDUSTape®

Non-vented tape seals "fluted" edge of panels, is easy to apply, ensures condensation drainage, and blocks out dust and insects.

AntiDUSTape® two roll pack contains one 24' x 1" non-vented top-of-panel roll (Part #92698) and one 24' x 1" vented bottom-of-panel roll (Part #92696).



Before You Begin

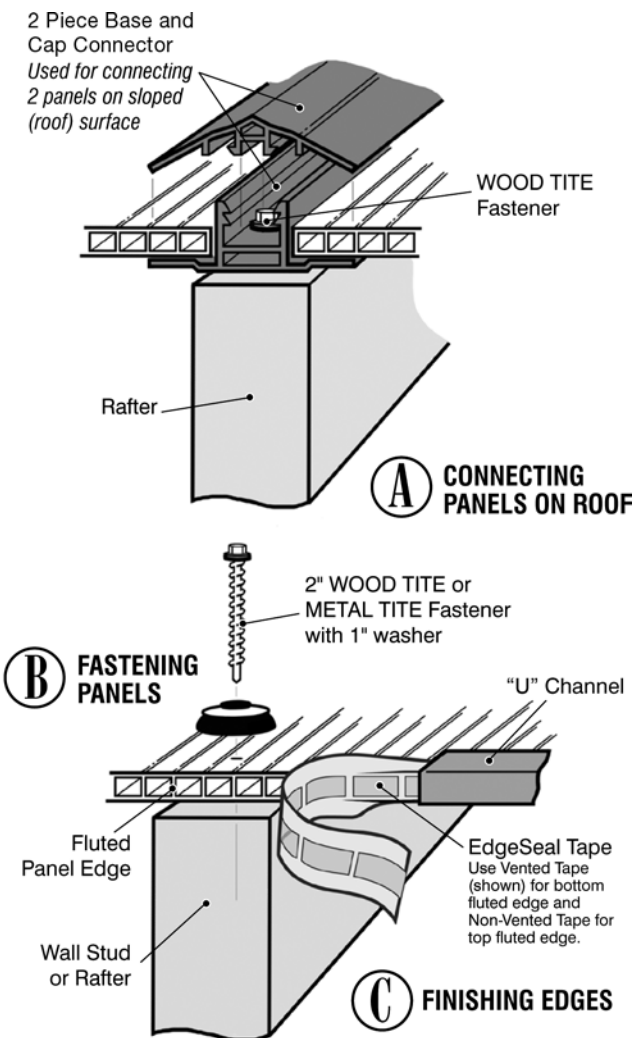
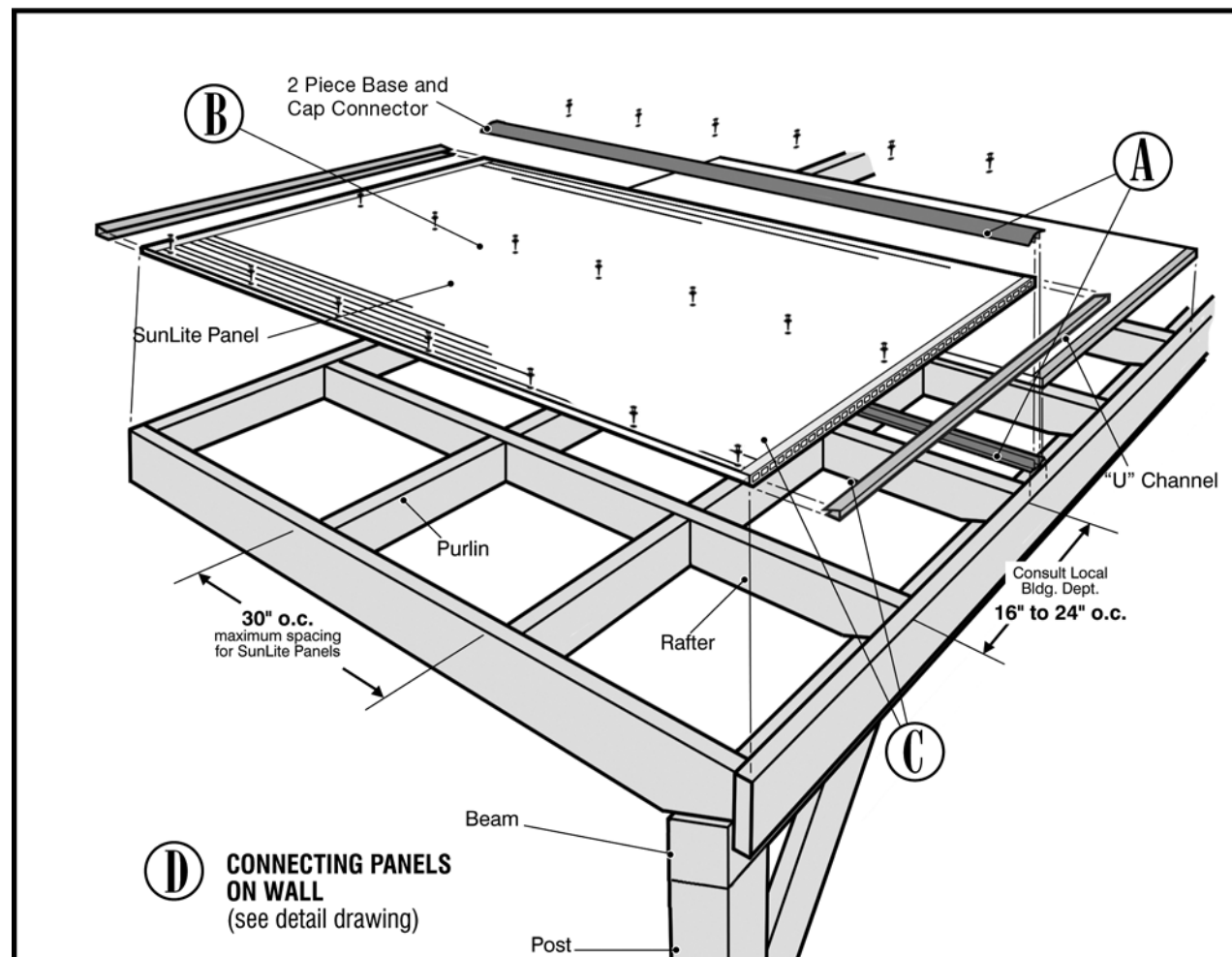
Snow, wind and weather loads should be considered when determining the slope degree of your structure (Min. 2" in 12"). Before installation, check local building codes for relevant specifications and recommendations. Follow local codes at all times.

TRANSPORTATION, HANDLING AND STORAGE: Do Not transport, leave or store panels in direct sun before or during installation. For outdoor storage, cover securely with a white opaque polyethylene sheet to avoid solar heat gain between the panels. The Sun's light is magnified when passing

through uncovered sheets increasing the temperature of the sheets which leads to degradation and distortion. Penetration of water between the sheets in storage will accentuate this heat gain. Therefore it is recommended to store the panels indoors. Panels will withstand heat when properly installed and ventilated. Store the panels against a wall so that the flutes run vertically, or stacked evenly on a horizontal flat surface with longer lengths on the bottom. Do not stack other items on top of panels. If panels are not stacked directly on floor, be sure to support evenly.

FLEXIBLE ENOUGH FOR CURVED STRUCTURES: SUNLITE panels may be used in curved applications, as long as the radius of the curve is not less than 20 feet.
BE SURE TO CAREFULLY READ ALL INSTRUCTIONS

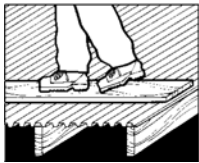
Installation details for proper construction



ON WALL
(see detail drawing)

Post

TYPICAL CANOPY FRAMING DETAIL



SAFETY

Never walk on sheets, use a board placed across at least 3 rafters to spread the load.

Horizontal
Blocking
between
Wall Studs

2" WOOD TITE
Fastener
with 1" washer

"H" Channel
used for connecting
2 panels on vertical
surface



CONNECTING PANELS ON WALL

INSTALLATION NOTES

Install panels with the label side facing toward the sky.

To Cut Panels: Use either a circular saw with a minimum of 10 teeth per inch, a utility knife and a straight edge, or a pair of snips. Support the sheets to avoid vibration and cut at slow speed.

Pitch: This is the amount of height in inches the rafter rises over a 12" run. Minimum slope is 2" in 12". Never install panels on flat roofs.

Purlins/Cross Supports: Cross supports (purlins) must be no more than 30" apart for SUNLITE.

EdgeSeal Tape: Use to cover the fluted edges of SUNLITE panels to seal out debris. NOTE: AntiDUSTape® comes in both non-vented (for top edge of panels) and vented (for bottom edge of panels) to allow drainage.

2 Piece Base and Cap Connector: Used to connect 2 panels installed as roof surfaces (see detail A).

"U" Channel: Covers the AntiDUSTape® on the fluted edges of the panel. Can be used on the non-fluted edges for a clean appearance (see detail C).

"H" Channel: Used to connect 2 panels mounted vertically for walls, fences, partitions, etc. (see detail D).

Sealants: For SUNLITE sheets, it is recommended you use a 100% silicone sealant, or any silicone sealant/adhesive that is recommended for polycarbonate material.

Ventilation: Ventilation is recommended to avoid condensation and heat build up in an enclosed structure.

Fasteners: Use Palram fasteners with special EPDM washers only. Predrill all fastener holes with a 3/16" drill bit to accommodate for the thermal movement of the panel. Longer length sheets should have holes overdrilled. Failure to accommodate thermal movement will cause buckling of the sheet. Attach fasteners every 12" in the vertical direction. In high wind areas, fasten **every 8"**. Use 2" fasteners for all roof applications. DO NOT overtighten fasteners causing the rubber washer to compress.

TIP: Tighten all fasteners until they are "snug". If the black EPDM washer becomes deformed, the fastener is too tight!



Care And Maintenance: Avoid contact with chemicals, paints, adhesives or other synthetic materials that are incompatible with polycarbonate. Never use glass cleaners with ammonia, or ammonia based products. Clean with luke-warm soapy solution using a soft cloth or sponge. Do not use abrasive brushes as these will mark the surface.



Inasmuch as Palram Americas has no control over the use (and/or Installation method) to which others may put this material, it does not guarantee that the same results as those described herein will be obtained. Each user of the material should make their own test to determine the suitability of the material for their own particular use. In the event of a warranty claim for product failure, Palram Americas reserves the right to inspect any or all of the sheets involved and the installation site itself while the sheets are still in their original position and have not been removed or moved or altered in any way. For a complete copy of the SUNLITE Multiwall Polycarbonate Warranty, contact Palram at 1-800-999-9459 or visit us online at www.PalramAmericas.com.

©2011-2015 Palram Americas, Inc. All Rights Reserved.

Installation Overview